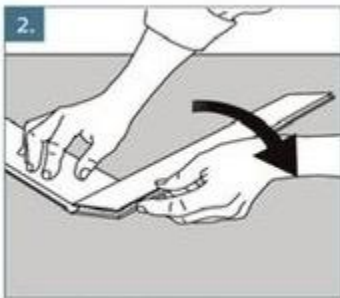


Laminate Herringbone Installation Guide

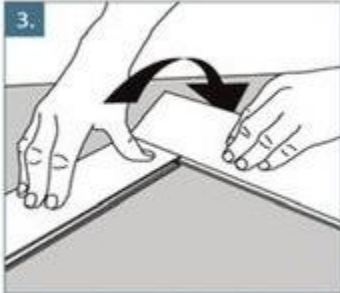




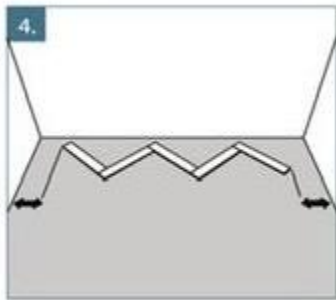
- 1. Select a wall to begin your installation and start at the left corner. Begin with an A-Panel and position it so that its long side is angled at 45 degrees toward the left wall. Ensure that the gap between the left wall and the panel is smaller than the length of one panel.**



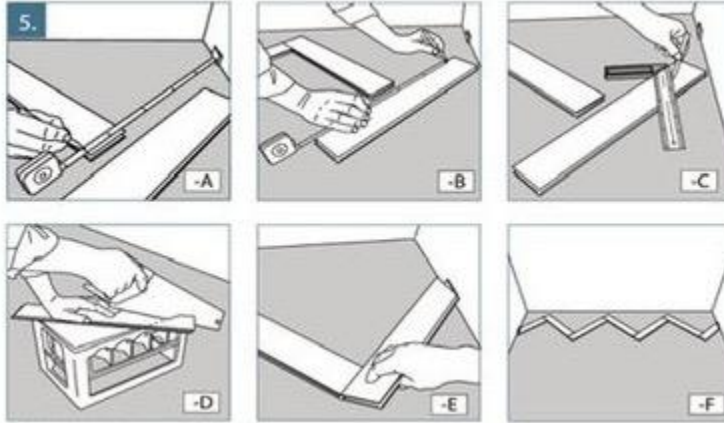
- 2. Attach the next panel, which should be a B-Panel. Angle the long side of the B-Panel against the short side of the previously installed A-Panel. Lower the B-Panel flat onto the floor to secure the panels tightly together. Ensure that the grooves on both panels align seamlessly.**



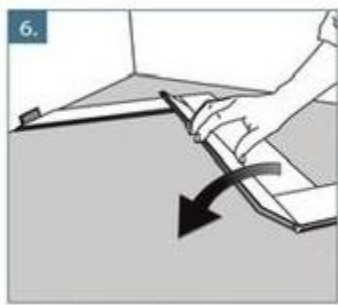
- 3. Install the next panel, which should be an A-Panel. Angle the long side of the new A-Panel against the short side of the previous B-Panel and lower it into place. Continue this process, alternating panels along the starting wall, until you have installed as many panels as will fit.**



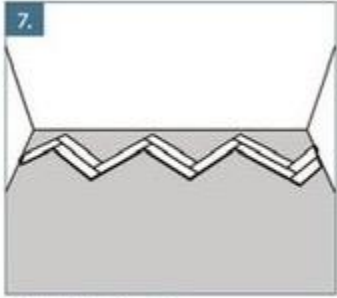
- 4. Align the first row of panels so that it is centered along the starting wall. Ensure the gaps between the row and both side walls are smaller than the length of a single panel. If the alignment is off, add a panel to the right side to correct the spacing.**



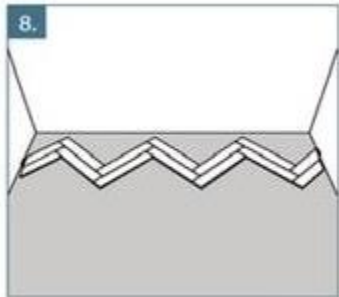
5. Measure and trim the end panels to fit using a fine-toothed saw. Complete the first row with these cut end panels, ensuring you leave a 10mm gap between each panel and the adjacent walls.



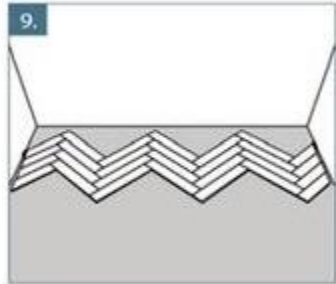
6. Begin the second row with an A-Panel. Position the new panel against the panels in the previous row and lower it into place.



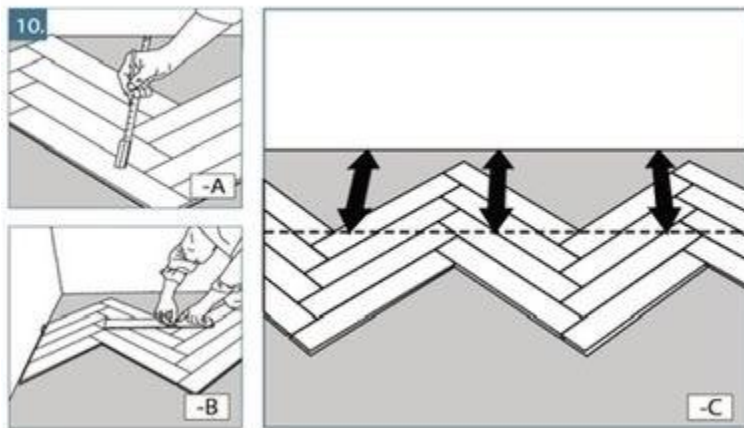
- 7. Proceed by installing all the A-Panels in the second row from left to right. Complete the row with a panel cut to size as outlined in step 5.**



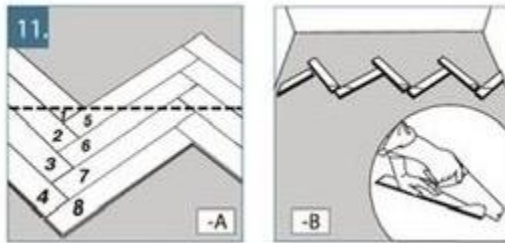
- 8. Next, install the B-Panels, working from right to left across the second row. Complete the row with a panel cut to size, following the instructions in Step 5.**



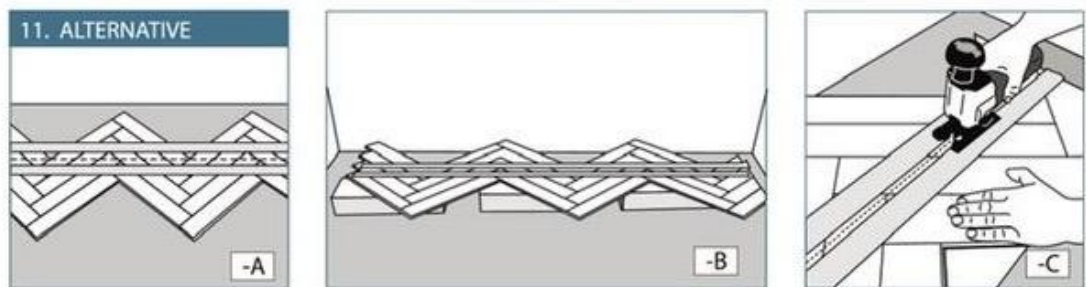
9. Continue installing additional rows until you have completed four full rows.



10. Adjust the initial rows so that the first four rows are cut parallel to the wall. Measure and mark the floor panels for cutting, ensuring they are consistently parallel to the wall.



11. Label the panels sequentially from 1 onward to keep them organized. Carefully dismantle the panels and cut them to size along the previously marked lines.



Alternative Method for Cutting the First Rows:

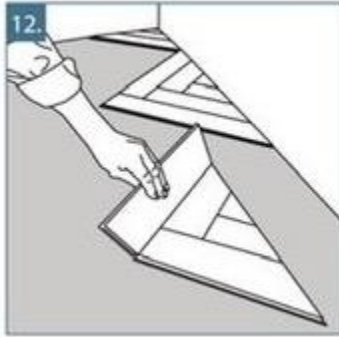
- a. Leave the end panels on the left side uninstalled.
- b. Apply tape along the marked cutting lines and place the flooring on top of a stack of flooring packages.
- c. Cut along the marked lines.
- d. Install the adjusted rows in place.
- e. Complete the first rows by installing the remaining end panels, starting with the end panel in the last row and finishing with the first row.



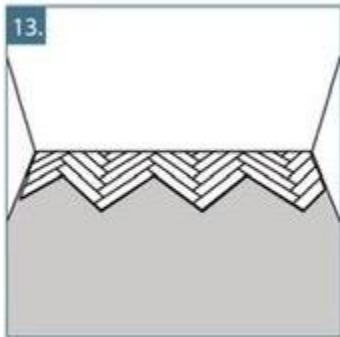
AKVERSE

LUXURY EIR WATER PROOF LAMINATE FLOORING

UNICLIC
CLICK SYSTEM

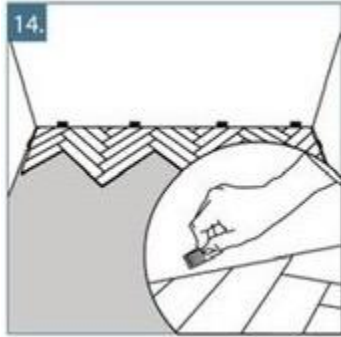


- 12. To install the starting triangles, connect the cut starting panels to form triangular shapes one by one, beginning from the left corner. It is advisable to use glue to secure the smallest parts of the triangles by applying a small amount of glue inside the groove.**

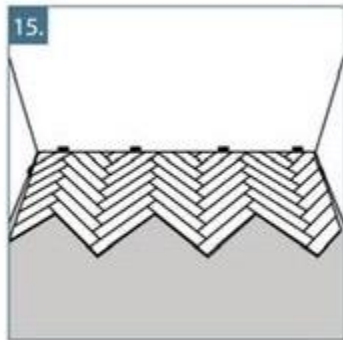


- 13. To install additional rows, begin by connecting the triangles and adding more panels. Start each row from the left using A-Panels, and complete the row with a cut piece of panel (as described in Step 5). Next, install the B-Panels in the row. Finally, finish by installing the left end panel, trimmed to fit.**

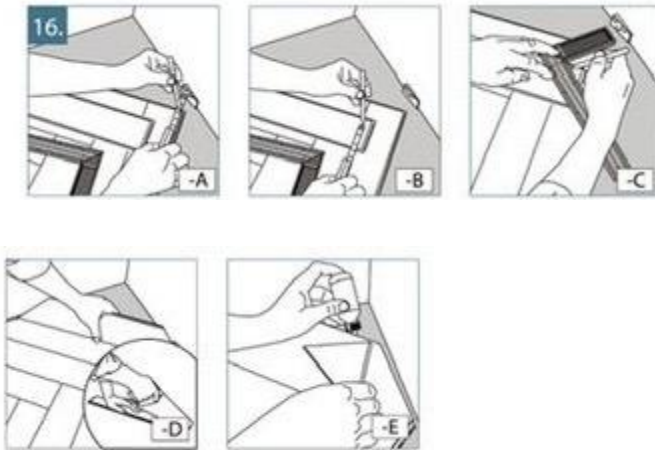




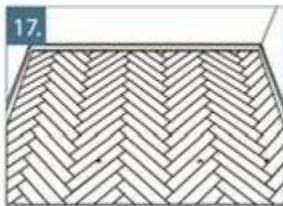
14. Place spacers between the flooring and the wall to maintain a 10mm expansion gap.



15. For the following rows, begin by installing the A-Panels from left to right, then complete the row by placing the B-Panels from right to left.



- 16. Measure and trim the panels in the last row to fit. For the smallest panel pieces, it is advisable to use glue. Apply a small amount of glue inside the groove to secure them in place.**



- 17. Remove the spacers and cover the expansion gap with skirting boards or beadings.**